

Tone high-level blondes.

Spotlight on level 9 Milkshakes.



L'ORÉAL
PROFESSIONNEL
PARIS

For more information visit
www.lorealprofessionnel.com.au | lorealprofessionnel.aus
[@lorealpro_education_aus](https://twitter.com/lorealpro_education_aus)

Dia light
Acid tone on tone
colouration.
Zero ammonia. Zero lift. Ultra conditioning.

L'ORÉAL
PROFESSIONNEL
PARIS

Dia light



Controlled application.
Gel-crème consistency for
precision application.



Flexible processing time.
(5-20 minutes).

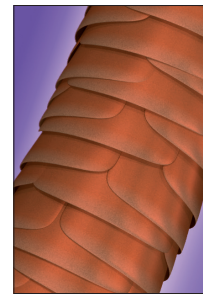


+30% more conditioning*.
Conditions hair after lightening
and colour services.

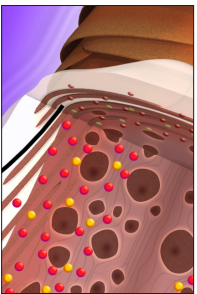
*vs. uncoloured hair



[Science behind Dia Light]



Before colour.
On colour-treated
& sensitised hair,
the cuticle scales
are already open.



During colour.
DIA Light has an
acid pH close to
the natural pH of
the hair.
There is no lift with
gentle penetration of
colourants for long
lasting colour.



After colour.
The cationic
polymers in DIA Light
have a resurfacing
effect on the cuticle,
leaving the hair with
amazing shine.

Preparation

- 1 : 1.5 mixing ratio
75ml of DIActivator to 1 tube (50g)
- Measure 75ml of 6-vol, 9-vol or 15-vol DIActivator depending on the desired intensity of the result.



Application

On dry hair, spray Metal Detox Pre-Treatment Spray on each section and apply Dia Light formula with a brush or a bottle on the re-growth, mid-lengths and ends.

Flexible processing time: 5 to 20 minutes

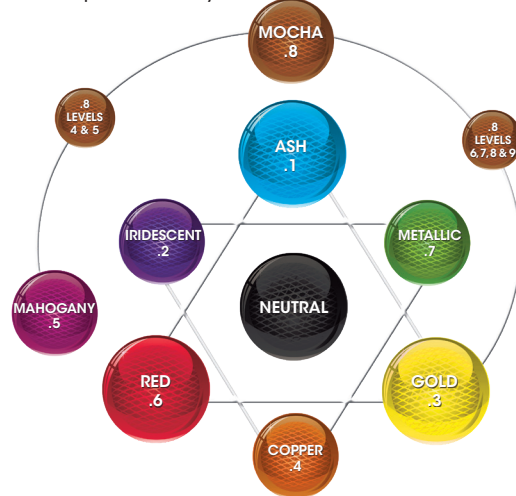
Rinsing

When development time is complete, add a little warm water to the hair and gently emulsify.

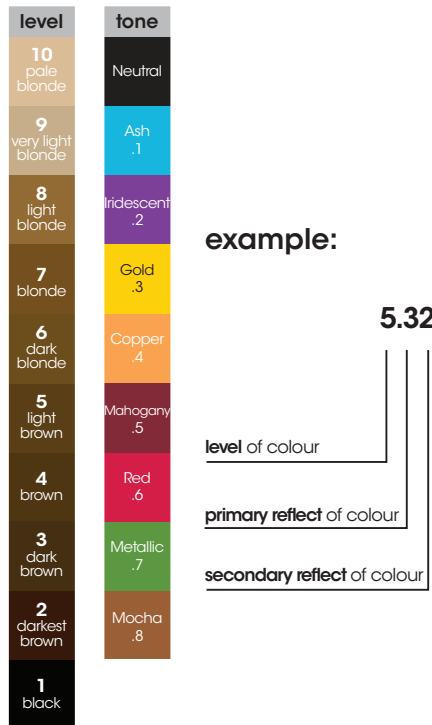
Thoroughly rinse colour from the hair and shampoo with Metal Detox Shampoo to pro guarantee your colour result. Follow with Metal Detox mask and or care for cosmeticity.

Colour Theory

- Opposite colours on the colour wheel will counteract or neutralise each other.
- Opposite colours on the colour wheel are also complementary.



Numbering System



Ash & Metallics									Iridescents				Cool Browns & Blondes			Mochas	Neutrals	Warm Browns & Blondes		Golds					Coppers			Reds	
									.02	.2	.21	.22	.12	.13	.23	.8		.31	.32	.03	.3	.15	.34	.35	.40	.43	.46	.4	.66
10																													
9																													
8																													
7																													
6																													
5																													
4																													
3																													